

SAVP Series

Voltage Control

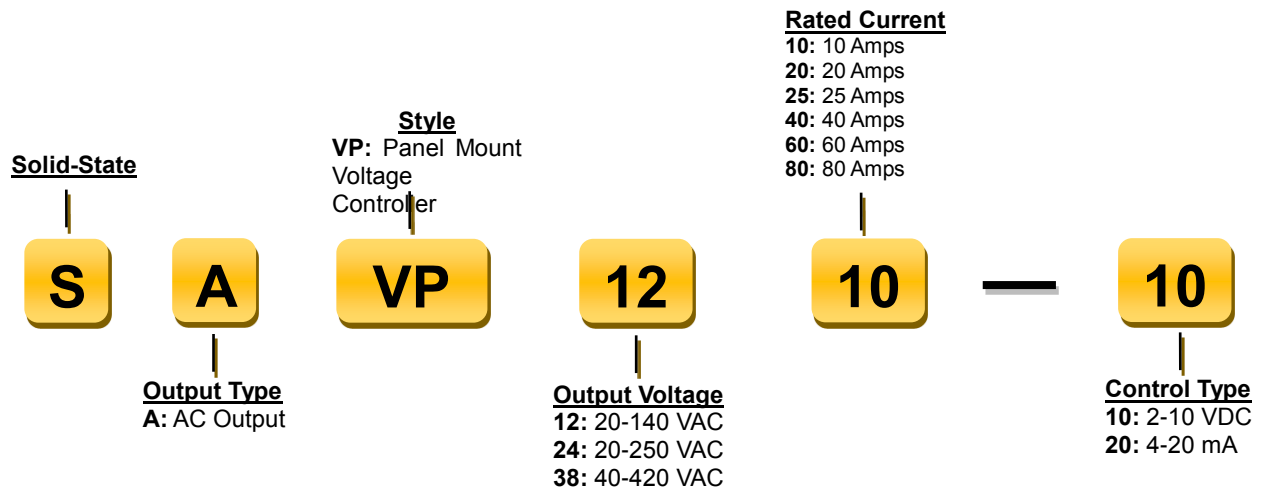


- AC output proportional controller
- Rating from 10A to 80A @ 120 VAC, 240 VAC or 400 VAC
- 2 to 10 VDC or 4 to 20 mA DC control
- Removable IP 20 touch-safe cover
- Easy-to-use thermal pad
- CE approved, RoHS/EMC compliant.
- Designed in according with the requirements of IEC 62314
- Mainly for resistive loads
- For transformer loads, control output voltage range is 80-100% of rated voltage.

PRODUCT SELECTION

Output Voltage	10A	20A	25A	40A	60A	80A
120 VAC	SAVP1210	SAVP1220	SAVP1225	SAVP1240	SAVP1260	SAVP1280
240 VAC	SAVP2410	SAVP2420	SAVP2425	SAVP2440	SAVP2460	SAVP2480
400 VAC	SAVP3810	SAVP3820	SAVP3825	SAVP3840	SAVP3860	SAVP3880

MODEL NAME DEFINITIONS



OUTPUT SPECIFICATIONS DIFFERENT VOLTAGES ⁽¹⁾

Description	SAVP12	SAVP24	SAVP38
Operating Voltage (47-63Hz) [Vrms]	20-140	20-250	40-420
Transient Overvoltage [Vpk]	800	800	1200
Maximum Off-State Leakage Current @ Rated Voltage [mA _{rms}]	7	7	7
Minimum Off-State dv/dt @ Maximum Rated Voltage [V/μsec]	300	300	300
Internal Snubber	Yes	Yes	Yes

Visite nuestra web en www.gmelectronica.com.ar

OUTPUT SPECIFICATIONS DIFFERENT CURRENTS ⁽¹⁾

Description	10A	20A	25A	40A	60A	80A
Maximum Load Current ⁽²⁾ [Arms]	10	20	25	40	60	80
Minimum Load Current [Arms]	0.15	0.15	0.25	0.4	0.4	0.4
Maximum 1 Cycle Surge Current (50/60Hz) [Apk]	152/160	248/260	334/350	477/500	573/600	955/1000
Maximum On-State Voltage Drop @ Rated Current [Vrms]	1.15	1.15	1.15	1.15	1.15	1.15
Thermal Resistance Junction to Case (Rjc) [°C/W]	1.89	1.44	1.12	0.71	0.57	0.49
Maximum 1/2 Cycle I ² t for Fusing (50/60 Hz) [A ² sec]	142/129	284/258	285/259	1770/1629	2442/2247	3230/2971
Minimum Power Factor (with Maximum Load)	0.5	0.5	0.5	0.5	0.5	0.5

INPUT SPECIFICATIONS ⁽¹⁾

Description	SAVP12	SAVP24	SAVP38
Control Voltage Range (-10 suffix)	2-10 VDC	2-10 VDC	2-10 VDC
Control Current Range (-20 suffix)	4-20 mA	4-20 mA	4-20 mA

GENERAL SPECIFICATIONS

Description	Parameters
Dielectric Strength, Input & Output to Base (50/60Hz)	2500 Vrms
Minimum Insulation Resistance to Base(@ 500 V DC)	10 ⁹ Ohm
Ambient Operating Temperature Range	-40 to 80°C
Ambient Storage Temperature Range	-40 to 125 °C
Weight (typical) [Gram]	106
Housing Material	UL E211125: 94 V-0
Terminal Material	Gilded
Baseplate Material	Copper
Humidity	85% non-condensing

RECOMMENDED MODEL & HEATSINK

Choosing compatible current is critical in selecting a right model of voltage controllers. Our engineers recommend parts according to actual applications and internal components of relay. Heatsink in the table are compatible (size and thermal parameters) with the corresponding voltage controllers.

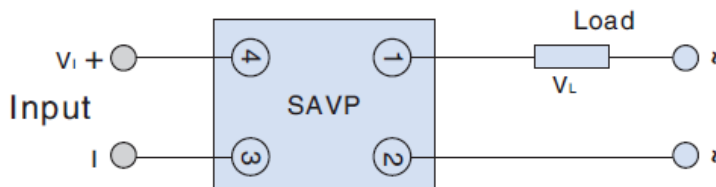
Application to Electric Heating & Lamp Controls

Continuous Load Current	0.1A-7.2A	0.1A-16.5A	0.15A-19.5A	0.15A-24A	0.15A-29A	0.15A-49A
Recommended Model ⁽³⁾	SAVP1210-10	SAVP1220-10	SAVP1225-10	SAVP1240-10	SAVP1260-10	SAVP1280-10
	SAVP2410-10	SAVP2420-10	SAVP2425-10	SAVP2440-10	SAVP2460-10	SAVP2480-10
	SAVP3810-10	SAVP3820-10	SAVP3825-10	SAVP3840-10	SAVP3860-10	SAVP3880-10
Recommended Heatsink	Panel	X50	G60	G60	G80	T80
	Din Rail	CR75	CR75	CR75	CH60	CH80

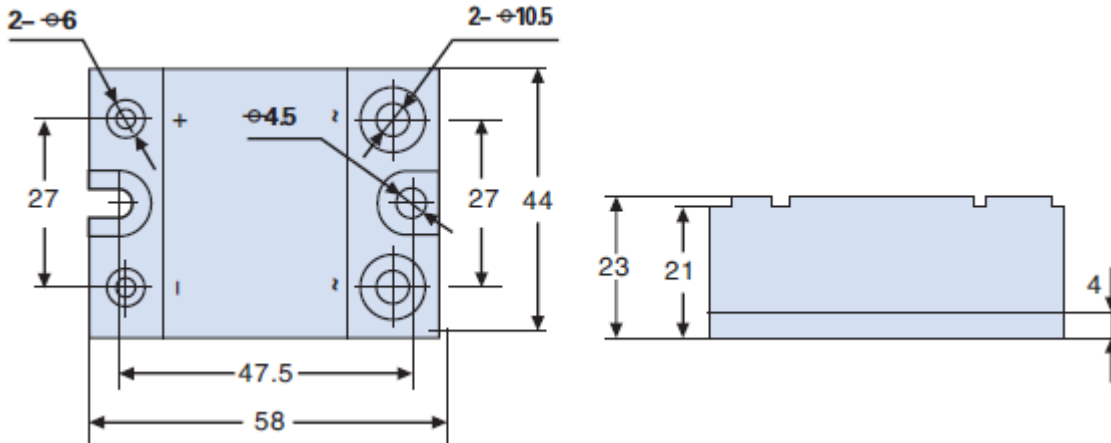
Application to Transformer Loads ⁽⁴⁾

Continuous Load Current	0.1A-3.2A	0.1A-7A	0.15A-8.2A	0.15A-10.4A	0.15A-12.3A	0.15A-21A
Recommended Model ⁽³⁾	SAVP1210-10	SAVP1220-10	SAVP1225-10	SAVP1240-10	SAVP1260-10	SAVP1280-10
	SAVP2410-10	SAVP2420-10	SAVP2425-10	SAVP2440-10	SAVP2460-10	SAVP2480-10
	SAVP3810-10	SAVP3820-10	SAVP3825-10	SAVP3840-10	SAVP3860-10	SAVP3880-10
Recommended Heatsink	Panel	X50	X50	G60	G60	G80
	Din Rail	CR75	CR75	CR75	CR75	CH60

WIRING DIAGRAM

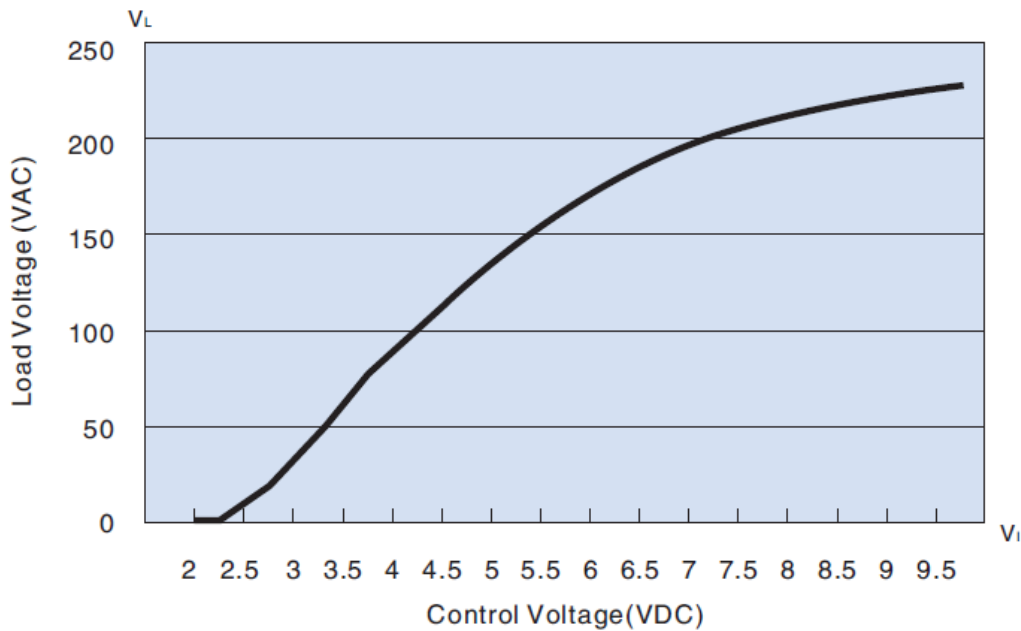


MECHANICAL SPECIFICATIONS



Unit: millimeter

INPUT&OUTPUT GRAPH



GENERAL NOTES

- (1) All parameters at 25°C and per section unless otherwise specified.
- (2) Heat sinking required, for derating curves see next page.
- (3) It is DC control (-10 suffix) as a default in the recommendation table, but it can be changed to current control (-20 suffix) according to demand.
- (4) For transformer loads, control output voltage range is 80-100% of rated voltage.

AGENCY APPROVALS

Designed in accordance with the requirements of IEC 62314

